



Community First

*City of Granite Falls
In Partnership With
Snohomish County
Sheriff's Office*



Sheriff Ty Trenary

City Manager Brent Kirk

Police Report for October 19th 2016

NOTABLE POLICE INCIDENTS/ACTIVITIES:

MARIJUANA IN A GRANITE FALLS HIGH SCHOOL ARREST

On 10/10/2016, a Granite Deputy responded to a report of a student found to be in possession of narcotics at one of the Granite Falls High schools. The substance was determined to be marijuana. The school is handling it on their end and charges have been referred by the Police Department for Possession of Marijuana (under 40 grams/underage).

RECOVERY OF STOLEN PROPERTY:

On 10/03/2016, a Granite Deputy took a burglary report from the 300 block of W. Stanley Street in which two gas chainsaws and multiple other power tools were stolen. There were no initial leads, but the bolt cutters that had been used to gain access to the tools left a unique tool mark on the cut lock. During an occupied stolen vehicle recover that took place on 10/10/2016 outside of the City limits, bolt cutters were recovered from the stolen vehicle that showed the same unique tool mark. Additionally, one of the stolen chainsaws has since been recovered from a pawn shop in Marysville and is now with the North County Property Crimes Unit, who is assisting us on this investigation. We now have good suspect information with a good chance of closing the burglary out with an arrest.

WARNINGS BEING ISSUED TO COMMERCIAL TRUCKS

Pursuant to a complaint regarding dump trucks losing their loads and causing damage to civilian cars and to Deputy observed road use violations, the Police Department has begun issuing out written information sheets (warnings) to any commercial truck found to be using the City streets in violation of Municipal Code Chapter 10.72-Truck Routes. The warning period will run from 10/11/2016 to 10/31/2016, after which the violation will be enforced.

FUTURE PROJECTS UPDATE:

PATROL TRUCK GRAPHICS

On 10/11/2016, Western Graphics came out to the Police Department and installed all four graphics packages to the assigned Granite Falls Patrol Trucks. A picture is worth a million words, but needless to say the result was fantastic. The entire fleet of trucks now matches and the citizens of Granite Falls now have “ownership” of their Police Department.



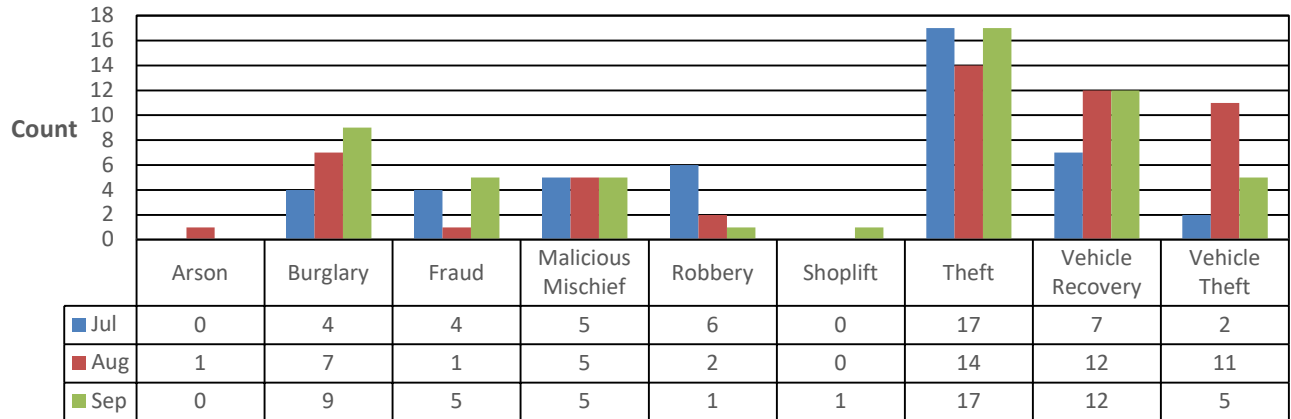
GRANITE FALLS STATISTICS

The following tables and charts compare incident types of service as reported for the Granite Falls Police Department. This contract has an Originating Agency Identifier (ORI) of WA0311100.

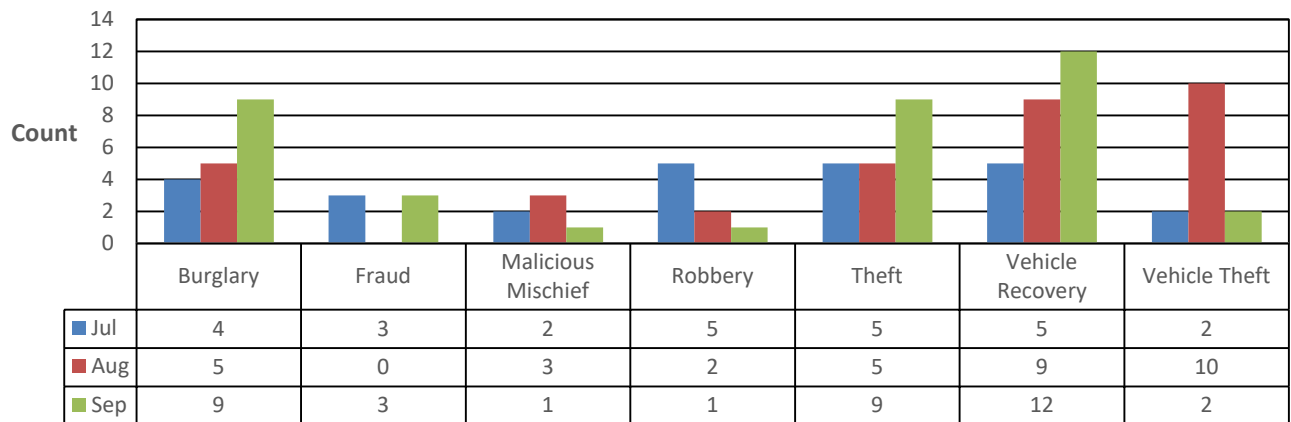
Call Source By Beat	Jul	Aug	Sep	Totals
GRF	375	334	392	1101
911	233	198	241	672
Officer-Initiated	142	136	151	429
E1	141	159	138	438
911	109	115	106	330
Officer-Initiated	32	44	32	108
E2	35	41	26	102
911	30	37	20	87
Officer-Initiated	5	4	6	15
L2	127	124	114	365
911	90	109	86	285
Officer-Initiated	37	15	28	80
UNVERIFIED	35	21	30	86
Officer-Initiated	35	21	30	86
Other Beats	82	43	38	163
	0	1	0	1
911	39	21	18	78
Officer-Initiated	43	21	19	83
Other	0	0	1	1
Totals	795	722	738	2255

Call Source	Jul	Aug	Sep	Totals
	0	1	0	1
911	501	480	471	1452
Officer-Initiated	294	241	266	801
Other	0	0	1	1
Totals	795	722	738	2255

Granite Falls Property Crime Last 3 Months - All Dispositions



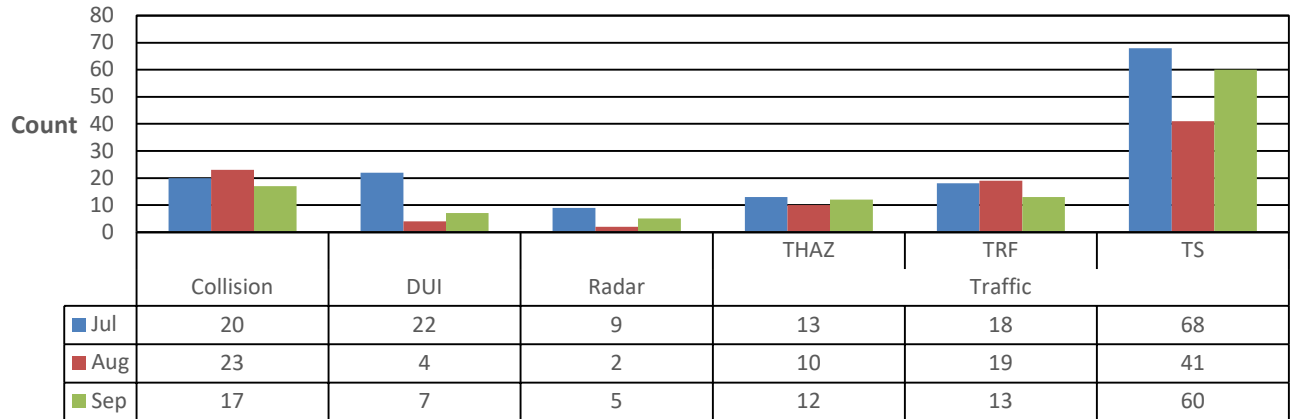
Granite Falls Property Crime Last 3 Months - Dispositions A, B, I & R



➤ Note: Dispositions may be singular or multiple (and combined in the database). Dispositions here, other than “all”, are those singular values and the end disposition of any combined string of dispositions.

A = Arrests, B = Booking, I = Impounded and R = Case Report

Granite Falls Vehicle Incidents Last 3 Months - All Dispositions



THAZ = Traffic Hazard, TRF = Traffic Problem and TS = Traffic Stop

Tickets Reported	Jul	Aug	Sep	Totals
Collision	0	1	0	1
Traffic Stop	24	15	17	56
Totals	24	16	17	57

Incident Types – Past 3 Months

Incident Type	Jul	Aug	Sep	Totals
911	14	18	19	51
Abandoned Vehicle	17	18	22	57
Abuse of Person	2	1	0	3
AID	0	0	1	1
Alarm	27	25	17	69
Animal	7	9	8	24
Arson	0	1	0	1
Assault	11	14	11	36
Assist	16	17	16	49
Attempt to Locate	0	0	1	1
Burglary	4	7	9	20
Civil	24	23	18	65
Collision	20	23	17	60
CPS	2	2	2	6
Death	4	1	0	5
Disturbance	37	42	36	115
DUI	22	4	7	33
DV	19	12	21	52
Fireworks	16	2	0	18
Follow Up	56	75	78	209

Foot	8	4	6	18
Fraud	4	1	5	10
Harassment	0	7	4	11
Information	3	1	1	5
Mail/Web Based Complaint/Report	4	0	1	5
Malicious Mischief	5	5	5	15
Mental	1	4	2	7
Noise Complaint	10	22	8	40
Nuisance	13	3	7	23
Order Violation	8	0	5	13
Ordinance Violation	3	4	0	7
Other	5	9	10	24
Paper Service	1	0	0	1
Parking	2	7	1	10
Person Lost/Found	5	7	9	21
Property Lost/Found	4	3	7	14
Public Assist	25	13	17	55
Pursuit	0	1	1	2
Radar	9	2	5	16
Robbery	6	2	1	9
RSO	0	3	2	5
SAR	8	4	2	14
School	0	2	6	8
Search Warrant	0	1	0	1
Security Check	63	52	44	159
Shoplift	0	0	1	1
Shots Heard	3	6	8	17
Special Ops	0	1	1	2
Substance Abuse	12	7	10	29
Suicide	6	5	6	17
Suspicious	124	105	123	352
Theft	17	14	17	48
Threat	4	2	2	8
Traffic	99	70	86	255
Trespass	14	15	16	45
Vehicle Recovery	7	12	12	31
Vehicle Theft	2	11	5	18
Warrant	10	10	6	26
Weapon	0	0	1	1
Welfare Check	12	13	12	37
Totals	795	722	738	2255

➤ Note: All data was obtained through a LERMS Data Analysis and Mapping query. Tables and charts compiled by Volunteer Ray Coleman.